



• Some of the photos may include optional equipment.

We build a better future

North America Only

HYUNDAI LPG/GASOLINE FORKLIFT TRUCKS **Applied Tier 4 Engine**

**25L/30/33L-7M**

**25G/30/33G-7M**

 **HYUNDAI**  
CONSTRUCTION EQUIPMENT AMERICAS, INC.

# NEW criteria of Forklift Trucks

Hyundai introduces a new line of 7M series  
LPG / Gasoline forklift trucks.  
Excellent power and performance make your  
business more profitable.



**OPSS (Operator Presence Sensing System)**  
Control of mast tilting, lifting and lowering is not possible through  
operation of the appropriate control when the operator is not in the  
seated position. (Option)



• Some of the photos may include optional equipment.

## The new master on the job-site!

Smooth running, efficient and ergonomically designed, 25L(G)/30L(G)/33L(G)-7M series are made to meet your needs.

### 64.1HP/2,400rpm



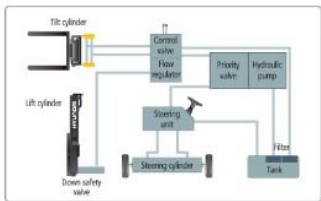
#### Powerful Engine GM 3.0L Engine

Market approved quality of GM 3.0L engine ensures incomparable performance, durability and additional value to the machine. Powerful and efficient engine provides excellent fuel consumption and excellent torque improved operator's comfort.  
(EPA/CARB Tier-IV Certified)

#### Fast and Stable Performance

Being able to quickly raise and lower the mast, as well as tilt it forward and backward, provides the best operational conditions during unloading. When the truck is fully loaded, mast lowering speed is carefully controlled to ensure safety by the down control valve.

MaxiLift and Tilt Lock System. *(Optional)*



#### State-of-the-art Hydraulic System

The latest large-capacity hydraulic system reacts quickly during operation, and a low-noise control valve increases both efficiency and durability.



#### Fully Hydrostatic Power Steering

A hydraulic steering system always guarantees smooth and flexible steering, preventing overrun and kick back.



#### Increased Mast Tilting Angle

Utilizing the mast tilting angle of 6 degrees forward and 10 degrees backward, the operator can safely and rapidly perform loading and unloading jobs.

#### Faster Travel Speed & Better Gradability

The powerful high output engine provides greater acceleration, better gradability and faster travel speed on any tough terrains or slopes.



#### Gradability (Loaded)

25L(G)-7M: 39.3%  
30L(G)-7M: 32.1%  
33L(G)-7M: 29.0%

#### Travel Speed (Unloaded)

25L(G)-7M: 10.9 mph  
30L(G)-7M: 11.5 mph  
33L(G)-7M: 11.5 mph

## Ergonomic operator friendly compartment design!

A design based on human engineering relieves fatigue and increases operator's efficiency.

### Operator Friendly Gauges and Water-resistant Monitor Panel



- ① Parking brake lamp
- ② Directional indicators
- ③ Fuel warning lamp
- ④ Engine oil warning lamp
- ⑤ Transmission oil temperature warning lamp
- ⑥ Battery charging warning lamp
- ⑦ Air cleaner filter warning light
- ⑧ Warning light indicator
- ⑨ Water separator lamp
- ⑩ Pre-lower indicator
- ⑪ Water temperature gauge
- ⑫ Fuel gauge
- ⑬ Hour meter
- ⑭ Engine check lamp
- ⑮ Seat belt warning
- ⑯ GPS warning

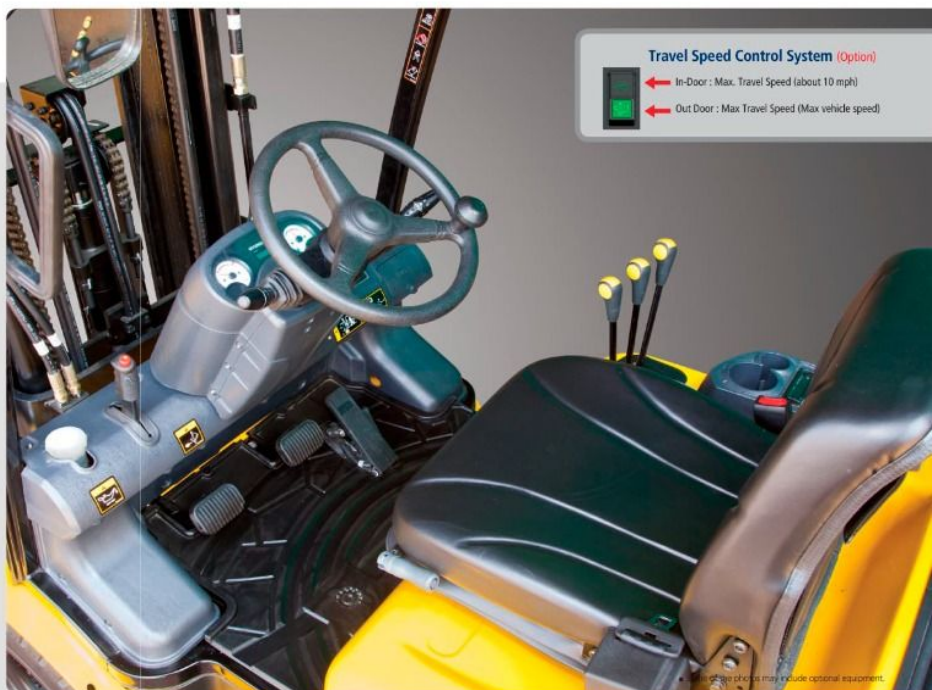
### Full Suspension Seat

An attractive and adjustable seat, based on a human engineering design, provides great comfort, safety and durability.



### New High Visibility for Safe Operation

The operator is able to work with increased safety and accuracy due to a wider view mast.



### Travel Speed Control System (Option)

- ➔ In-Door : Max. Travel Speed (about 10 mph)
- ➔ Out Door : Max Travel Speed (Max vehicle speed)



### Ergonomically Positioned Pedals

Based on human engineering, the accelerator, brake and inching pedals are optimally positioned for convenience while operating the equipment.



### Cup Holder & Console Box

Additional storage spaces are located inside the operating space for operator's convenience.



### Quick Response of Operating Control Levers

Only minimal operator's effort is required for precise, safe and productive control.



### Adjustable Steering Wheel

Steering wheel with horn button can be adjusted by a lever on the right-hand side for the most comfortable operator position.



### Easy and Safe Shift Lever

A single lever on the left side of the steering column gives the operator fast, easy control of direction. The lever must be in the neutral position before the engine can be started.



### Secondary Horn

Secondary Horn gives access to lights and horn

## Danger-free through high durability!

Safety and durability are priorities in design of the equipment.



### Strong Overhead Guard

The safety overhead guard meets ISO 6055 regulation and protects operator during hazardous jobs.



### Parking Brake

Ratchet type parking brake requires less effort from the operator to set.



### Highly Durable Split Type Drive Axle

The bevel gear set and hub reduction axle smoothly delivers desired torque to the drive wheels.



Some of the photos may include optional equipment.



### Large Footboard & Hand Grip

Wide "open" step offers convenience and safety when entering and exiting truck.



### Expansion Bellows

The expansion bellows absorbs vibration and reduces noise generated from the exhaust gas system and also extends the life cycle of exhaust gas system.



### Electrically Monitored Air Filter

Air cleaner sensor alerts the operator of a restricted air filter and allows replacement before damage.



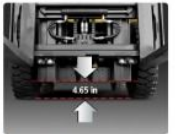
### Heavy Duty Single Unit Frame

Heavy duty single unit type frame, designed on the basis of accurate structural analysis, guarantees durability and safety.



### Bright, Protected Headlights

Bright, Protected head lights are positioned for exceptional visibility.



### Ground Clearance

The engine and transmission are assembled horizontally and positioned high in the frame to protect major components during operation on rugged surface.



